



RS200/400 inlands 3&4 October 2020 - Pre event guidance notes, Event Appendix and Race Briefing

Questions to consider and guidance before attending your event at Grafham Water Sailing Club for sailors, parents and authorised guests

Before you leave home

- **You are making an active OPT IN choice to take part in this event, go on the water and understand that you increase your risk and therefore household risk of exposure to COVID 19**
- A quick health check:
 - Have you had or been in contact with anyone with a positive Covid-19 test within the last 14 days? ○ Have you shown or suffered from any symptoms of Coronavirus within the past 14 days?
 - Have you had close or physical contact with anyone showing or suffering symptoms of Coronavirus within the past 14 days?
 - If you have answered YES to any of the questions, please STAY AT HOME and do not attend the event.
- Have you prepared yourself due to the lack of changing and shower facilities?
- Have you read the GWSC COVID19 procedures on our web site <https://www.grafham.org/covid-19-operating-procedures.html> ?
- Do you have your hand sanitiser and face covering?

On entry to the site:

- the club is required to request everyone who visits the site to scan the NHS Covid-19 QR code or register manually
- if you do not already have the App on your mobile device please install it before arrival
- the QR code is displayed at multiple sites on the building and around the grounds; please open the App and scan it every time you visit the site
- If you are unable to use the App, please complete a registration slip inside the entrance to the downstairs Café.

Camping and overnight:

- The Clubhouse will be closed overnight as are the changing rooms and showers. There are Portaloo toilets for use on the east side of the clubhouse and by the camping area.

Ashore at the venue

- Unless camping overnight, please do not arrive at the venue before 0915. Registration will be carried out by Meet and Greet personnel
- All changing rooms and showers are closed. Please bring and wear additional clothing appropriate to the prevailing weather conditions
- Toilet facilities will be limited and operating on a one way system. During clubhouse opening times these must be entered via the steps at the main entrance of the club house and the one-way system followed exiting down the external staircase. No more than 2 at a time. Hand dryer is turned off. There are paper towels, soap and sanitisers in place, please use them
- Boat parking will be controlled
- Look to minimise time in the boat park
- Maintain Social distancing of 2m with all outside your bubble
- Avoid sharing touch points, and when you do wash hand straight after: hoses, door handles, flushes.
- Expect to wear a face covering when you are indoors
- Launch and recover down the slipways allocated, observe social distancing and also reduce touch points and cross contamination. See site map attached below.

- Once in the water, move trolley to one side to keep slipway clear for other users. Trolleys must not be stacked.
- On return, if sails need to be dropped before recovering boat, do this on one side of the slipway so that it remains clear.
- Unless it is essential, do not handle any trolley but your own
- Authorised guests (non-sailors), have a plan what you will do when your sailors are on the water; there is no indoor space to wait in and it is illegal to gather in groups larger than 6 people.
- The Official Notice Board and all communication with the race office will be done electronically, so please bring your mobile device. The Notice Board can be accessed via <https://www.grafham.org/online-noticeboard.html> . Email for use during the event is office@grafham.org

Wash down

- Boats must be washed down before leaving the Club to comply with CCD guidance. The main wash own facility is above the slipway to the west of the clubhouse. A separate wash down facility will be available above the east slipway if launching is advised from there

While afloat at the event

- Maintain social distancing on the water, avoid rafting with other boats
- In crewed dinghies, do you have appropriate measures in place to follow the RYA Guidance on sailing & racing with participants from different households during COVID-19 in England
<https://www.rya.org.uk/SiteCollectionDocuments/clubs/RYA%20Sailing%20%26%20Racing%20in%20Mixed%20Households.pdf>
- Carry your own personal supply of food, drink and kit, you will not be able to deposit your dry bags or any rubbish in the safety boats.

Results

- Will be published online as soon as possible after the completion of racing on the GWSC web site.

Prize giving:

- There will be no prize giving. Prize arrangements are described in the race briefing.

Cafe:

- Face covering to be worn when ordering and collecting food. Follow the one way system, entering via the door facing the lake. Sanitiser is placed next to entrance and exit doors. Card payments only, contactless preferred.
- Breakfasts will be available from 0830 each day.

Consideration for people working at the event (race management teams, coaches, volunteers)

- They are in a work environment. Please respect their social distancing of 2m

GWSC SITE MAP



GRAFHAM WATER SAILING CLUB - EVENT APPENDIX

RS400 Inland Championships part of the Rooster National Tour – 4th October 2020

The RS Racing Circuit Sailing Instructions 2020 shall apply except as modified by this Event Appendix.

COMPETITORS BRIEFING – There will be no briefing. Notes to competitors including the sailing briefing are on the online noticeboard. Please note, there are significant changes from the NoR due to COVID requirements.

2 Notices to competitors

2.1 Will be posted on the event online noticeboard

4 Signals made ashore

4.1 Signals made ashore will be displayed on flagpole 2 on the foreshore in front of the Clubhouse.

5 Format of racing

5.1 4 back to back races are scheduled.

5.2 The first warning signal is scheduled for 1127.

5.3 No start will be signalled after 1500

10 The start

10.1 Starts will be using 3 minute start sequences i.e. 3 [warning], 2 [prep.], 1[prep removed], Go. This changes 2020 RS Sailing Instruction 10.1.

To alert boats that a race or sequence of races will begin soon, the orange starting line flag will be displayed with multiple sound signals at least one minute before the warning signal is made.

12 Change of the next leg of the course

12.1 To change the next leg of the course, the race committee will move a mark, move the finishing line or move the leeward gate. This changes 2020 RS Sailing Instructions 12.1.

Marks may be moved by not more than 100 metres and/or 10 degrees without signalling. This changes RRS 33.

14 The finish

14.1 The finishing line will be between a staff displaying a BLUE flag on the committee boat course side of the finishing mark described in the event appendix.

14.2 Shortening courses:

The meaning of Flag 'S' is changed as follows:

When the committee boat is in its normal position and displaying flag S, the leading boat, after rounding the next leeward mark 2P on its required side, will proceed thereafter to the normal finish line. On completing the same number of rounds as the leading boat, all other boats should proceed to the finish line in the same way.

Regardless of where Flag 'S' is displayed on the Committee Boat, the Finish Line will be between the staff displaying a BLUE flag and the finish mark as defined in Event Appendix A.

15 Protests and requests for redress

15.1 Protest forms are available from the Club Office. They shall be delivered there within the appropriate time limit.

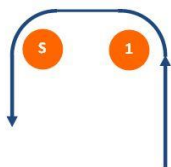
15.2 The protest time limit is 45 minutes after the last boat finished the last race of the day.

This changes 2020 RS Sailing Instructions 15.2

15.3 Notices will be posted online no later than 30 minutes after the expiry of the protest time limit to inform competitors of hearings in which they are parties or named as witnesses. It shall be the responsibility of competitors to check the notice board for such notices, obtain their copy of the protest form and make sure that they and their witnesses attend the hearing. Protests will be held in location indicated online.

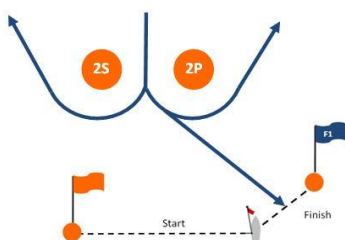
23 It is not possible for race committee vessels to accept trash. This changes 2020 RS Sailing Instructions 23

THE COURSE



MARKS

Marks 1, S 2P & 2S will be ORANGE Pillar Buoys
 The port-end start mark will be a Dan Buoy with an ORANGE flag
 The port end finish mark will be a Dan Buoy (mark F1) with BLUE flag.



If 2S is not used then round 2P to port.

COURSE	Mark Rounding Order
1	Start, 1, S, 2P then Finish between Committee Boat & F1
2	Start, 1, S, 2S & 2P, 1, S, 2P then Finish between Committee Boat & F1
3	Start, 1, S, 2S & 2P, 1, S, 2S & 2P, 1, S, 2P then Finish between Committee Boat & F1
4	Start, 1, S, 2S & 2P, 1, S, 2S & 2P, 1, S, 2S & 2P, 1, S, 2P then Finish between Committee Boat & F1

GRAFHAM SPECIFIC RULES

Entrants and authorised guests are temporary members of Grafham Water Sailing Club during the period of the event and shall comply with Club Rules and Bylaws. Failure to observe these may result in exclusion from the club premises.

MOVEMENT OF BOATS TO GRAFHAM WATER

In order to prevent the spread of non-native species there is a requirement to ensure that boats are clean before they visit the site using the principle of Check Clean Dry <http://www.nonnativespecies.org/checkcleandry/index.cfm>. This includes:

CHECK your equipment and clothing for live organisms – particularly in areas that are damp or hard to inspect.

CLEAN and wash equipment, footwear and clothing thoroughly. If you do come across any organisms, leave them at the water body where you found them.

DRY all equipment and clothing – some species can live for many days in moist conditions. Make sure you don't transfer water elsewhere.

Anglian Water ask for boats and equipment, arriving at Grafham Water that are from the following locations, to have been clean and dry for at least two days prior to arrival – if not, then they must not be launched at the Club:

- Wraysbury Reservoir and Wraysbury River near to Staines
- The Queen Mother Reservoir
- Queen Elizabeth II/Bessborough Reservoirs
- Queen Mary Reservoir
- Warwick East Reservoir, Warwick West Reservoir and William Girling Reservoir all located in the Lee Valley

MOVEMENT OF BOATS FROM GRAFHAM WATER

A non-native species of fresh water shrimp (commonly known as killer shrimps) have been found in Grafham Water and certain restrictions on boat movement have been imposed by AW, DEFRA or other bodies to prevent the spread of these to other locations in the UK. These requirements are prominently displayed on the club premises and will include washing boats and equipment before removal from the Club premises.

Failure to comply with the requirements of these restrictions may lead to expulsion from the event.

SIGNALS MADE ASHORE

RED FLAG or **RED MAROON** means 'If ashore, do not go afloat. If afloat, come ashore immediately.

A **BLUE AND WHITE** flag indicates that conditions are such that dinghy sailing is not allowed but experienced windsurfers are permitted to sail.

A **BLUE AND GREEN** flag indicates the presence of BLUE GREEN ALGAE in the reservoir and care should be taken whilst afloat and during launching and recovery of boats

RACING AREA

The prohibited area at the West end of the water is an obstruction. Its boundary is a line of buoys forming its eastern boundary.

Each **fishing boat**, and an area extending 20 metres in any direction from the fishing boat is an obstruction.

A **safety boat** in close attendance to a craft or competitor in difficulty is an obstruction.

EMERGENCY MEETING POINT

If you are involved in an emergency and you need to go to or direct others (including an emergency service such as an ambulance) to the Emergency Meeting Point at the Coxswain's Shed **52° 17.49 N, 000° 18.85 W**. Should aid be needed elsewhere on site, club staff and/or volunteers will divert resources there.

If you call an emergency service, you **must** inform a Staff Member (Coxswain or Office) so that GWSC can invoke its Emergency Protocol.

Graham Water Sailing Club, Chichester Way, Perry, Cambridgeshire PE28 0BU

Telephone 01480 810478

RS200/400 Inlands Racing Briefing

There will be no pre-race briefing. The following notes are in place of the briefing.

Any Notices to competitors will be posted on GWSC Open Meeting web site Notice Board.

Launching is likely to take longer than usual, please allow extra time to do this, remembering to follow the COVID rules.

The expected race area is the west end of the lake. The committee boat will display an orange flag to aid identification of the area. The flag will be removed approximately 20 minutes before the warning signal and redisplayed in accordance with Event Appendix 10.1.

The number of rounds to be sailed will be displayed on the starboard side of the Committee boat.

Target time for each race is 40-45 minutes for the leading boat.

In order to keep to the required time schedule, we expect to make use of the on water finishing using flag W.

Note that the start sequence has been changed to a 3 minute sequence by the event appendix.

Only the first 3 boats will receive a sound signal at the finish.

The preparatory signal will initially be flag U.

If a boat does not complete a race, or take part in a race, it is essential that a race committee boat is informed so that the correct score can be awarded. Alternatively phone the office on 0148 810478.

The support boats and committee boats are unable to accept trash and any personal belongings.

Before leaving the site, all boats and trolleys must be washed down using the pressure washers.

Results:

Will be published online as soon as possible after the completion of racing.

Prize giving:

There will be no prize giving. Prizes can be collected from a table outside the café. A tannoy message will announce when they are available. This will be promptly after results are finalised.

Prizes will be sanitised a day before the event, and will not be handled again before they are collected.